

DIRECTOR T&RS (RFD)  
**MASTER  
COPY**

# British Rail International

## Ferry Vehicles

### © COPYRIGHT NOTICE

This PDF file has been created from the original book with permission of BRB (Residuary) Ltd who, including the relevant successor organisation, retains copyright in the original document.

This PDF version courtesy of Chris Dugdale, 2016.

Individuals may: use, retain and print out this PDF version for their private information or for that of their non-commercial enthusiast society or railway club.

This document and any copies produced from it in any form may not be sold or lent for any payment in any form other than to cover copying or transmission costs. No reproduction permitted in any other form or circumstance without prior permission from the original copyright holder.

**CONTROLLED** **DERBY CONTROLLED  
COPY: 8029001/001**

## Diagram Book No. 330

---

BRITISH RAILWAYS (BR)Country 70

---

CAR CARRIERS

Exchange Condition 81

<u>Diagram</u>	<u>Description</u>	<u>Vehicle Numbers</u>
WIE 789	5 - ELEMENT CAR CARRIER	81 70 4971 000 - 059

---

BRITISH RAILWAYS (BR)Country 70

---

INTERMODALS

Exchange Condition 31

DiagramDescriptionVehicle Numbers

FIE 790

144t GLW INTERMODAL

31 70 4938 000 - 224

---

BRITISH RAILWAYS (BR)Country 70

---

OPEN WAGONS

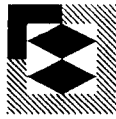
Exchange Condition 21

DiagramDescriptionVehicle Numbers

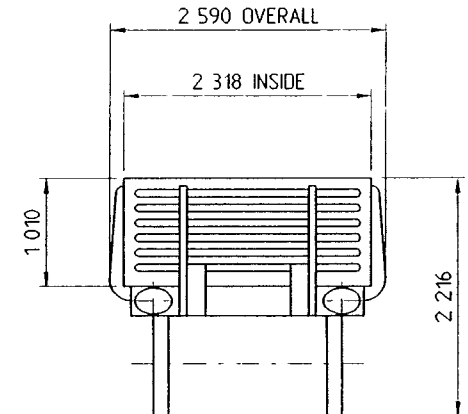
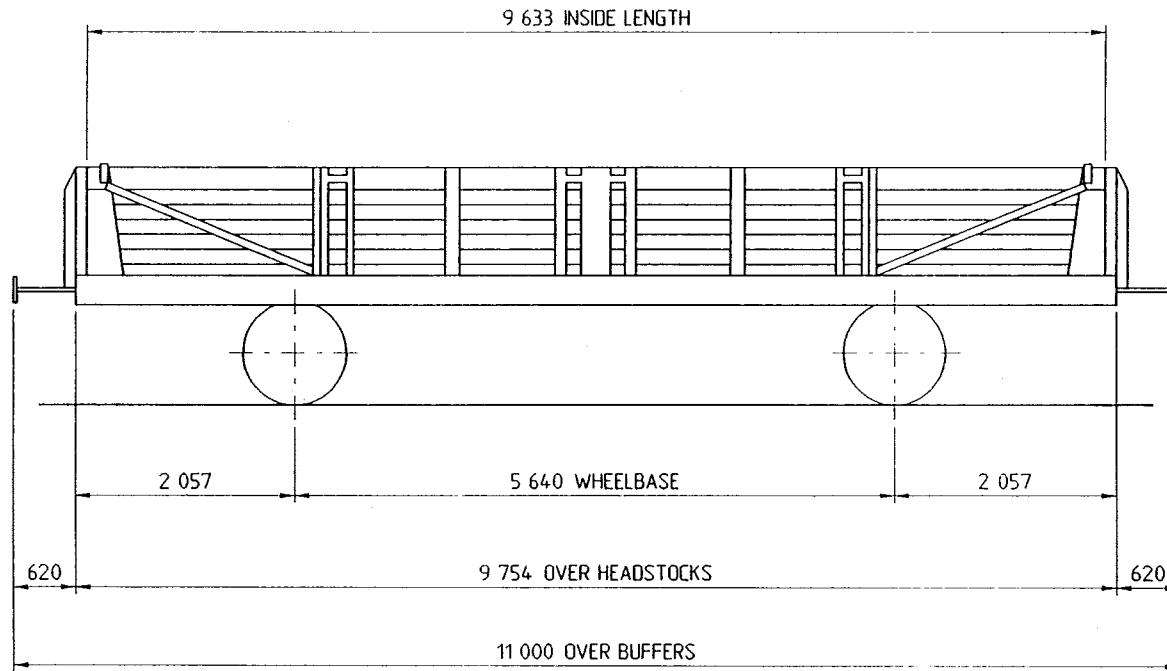
OIE 247

2 AXLE 40t GLW OPEN

21 70 6094 044, 046,  
049, 053, 056, 057



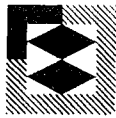
				TOPS INFORMATION								
90	A 18 t	B 22 t	C 26 t	D	AARKND	OPERATING SPEED		BRAKE FORCE DATA		EXCESS LENGTH	RA (GLW)	DESIGN SHEET
S	18 t	22 t	26 t		CARKND	60 mile/h UP TO	40 tonne GLW	AB 7t FORCE UP TO	20 t GLW	8	6	—
120					O I X C	mile/h ABOVE		17t FORCE ABOVE				
					VB 7t FORCE UP TO 40t GLW							



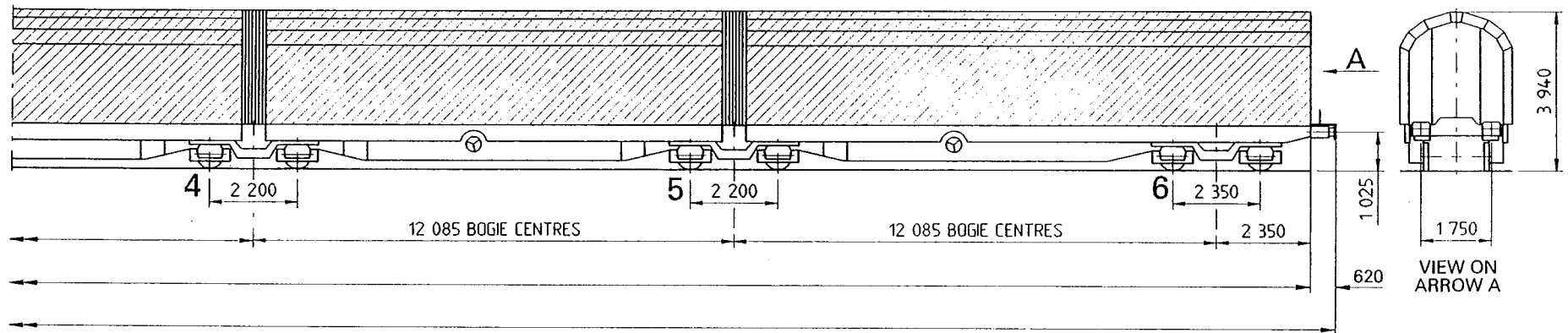
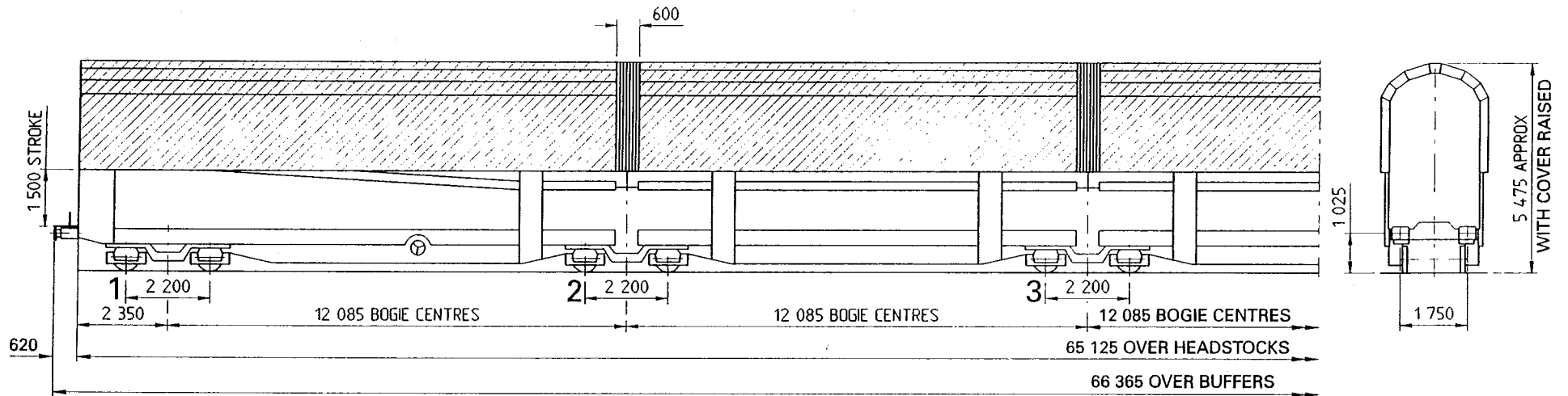
<b>TARE-</b>	13.66 t
<b>CAPACITY, WEIGHT-</b>	26 t
<b>CAPACITY, VOLUME-</b>	21 m <sup>3</sup>
<b>FLOOR AREA-</b>	32 m <sup>2</sup>
<b>MIN.CURVE-</b>	12 m
<b>GEN.ARRGT.DRG.No.-</b>	DN 21949

<b>BRAKE-</b>	DUAL
<b>SUSPENSION-</b>	DOUBLE LINK
<b>COUPLINGS-</b>	SCREW
<b>BUFFERS-</b>	HYDRAULIC
<b>WHEELS-</b>	∅ 1 000 mm
<b>JOURNALS-</b>	∅ 130 mm

<b>TYPE-</b>	Ffs
<b>WAGON No.-</b>	21 70 6094 044, 046, 049, 053, 056, 057
<b>BUILDER-</b>	B.R.
<b>OWNER-</b>	B.R.



				TOPS INFORMATION								
90	A	B	C	D	AARKND	OPERATING SPEED		BRAKE FORCE DATA		EXCESS LENGTH	RA (GLW)	DESIGN SHEET
S					CARKND	75 mile/h UP TO		FORCE UP TO a + (b x tonnes)				
120	45.0 t				W I A A	mile/h ABOVE 140 tonne GLW		FORCE ABOVE 0.8 (-12.59 + (0.4086t))			1	W 3238



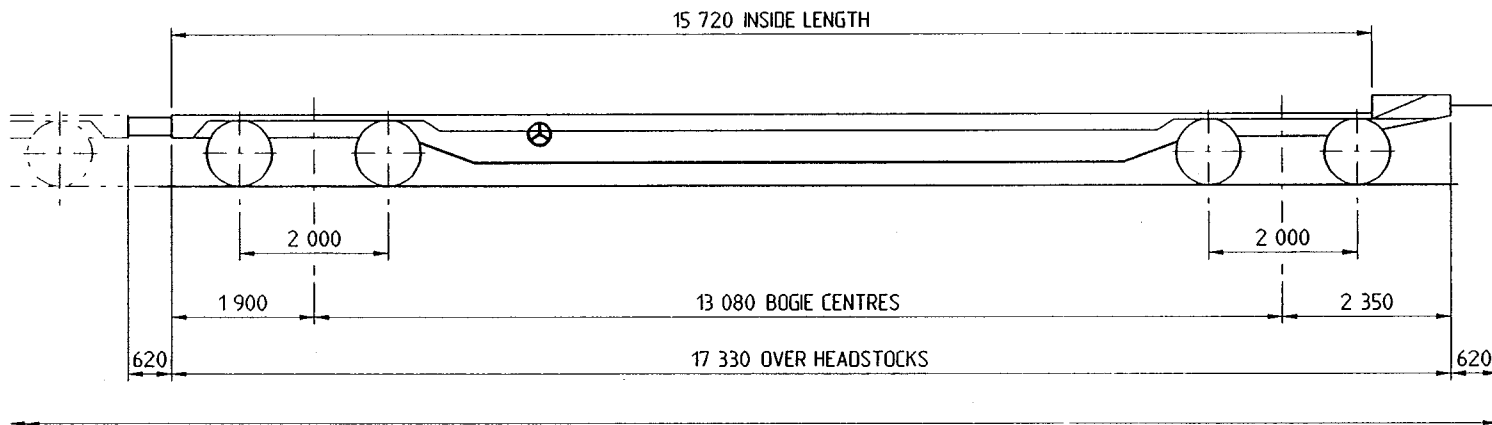
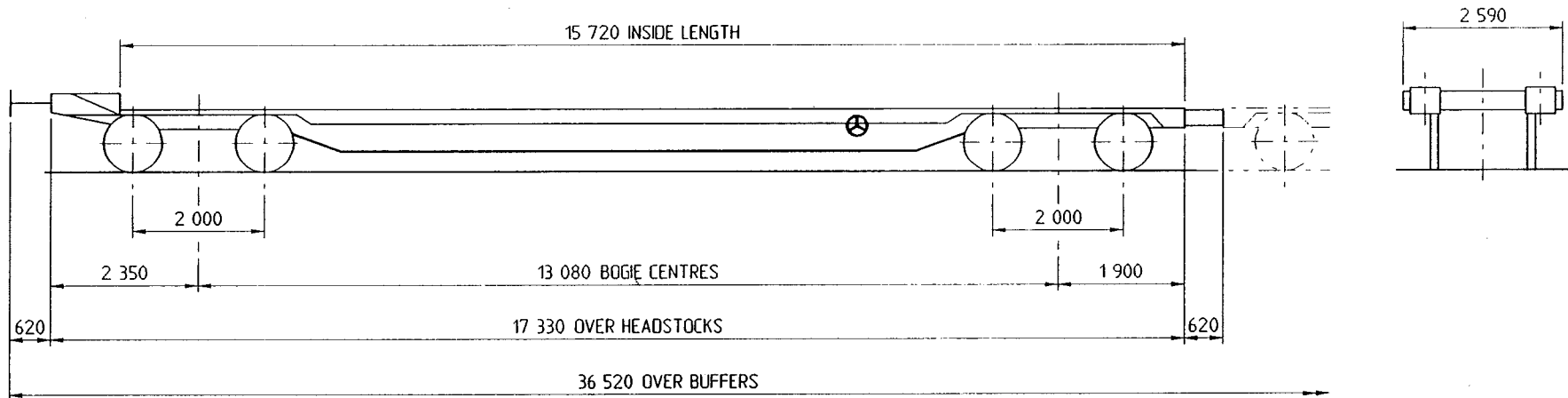
<b>TARE-</b>	95 t
<b>CAPACITY, WEIGHT-</b>	45 t
<b>CAPACITY, VOLUME-</b>	-
<b>FLOOR AREA-</b>	-
<b>MIN.CURVE-</b>	60 m
<b>GEN.ARRGT.DRG.No.-</b>	0-604 304

<b>BRAKE-</b>	AIR; HAND ON BOGIES 2, 4 & 5 ONLY
<b>SUSPENSION-</b>	Y39 BOGIES
<b>COUPLINGS-</b>	INTERNATIONAL SCREW
<b>BUFFERS-</b>	OLEO TO UIC 526-1 CATEGORY C
<b>WHEELS-</b>	∅ 680
<b>JOURNALS-</b>	∅ 120

<b>TYPE-</b>	Sefoorss
<b>WAGON No.-</b>	81 70 4971 000-059
<b>BUILDER-</b>	ARBEL FAUVET RAIL
<b>OWNER-</b>	RfD



					TOPS INFORMATION								
90	A	B	C	D	AARKND		OPERATING SPEED		BRAKE FORCE DATA		EXCESS LENGTH	RA (GLW)	DESIGN SHEET
S	128t	144t	144t		★★		CARKND	90 mile/h UP TO	112 tonne GLW	FORCE UP TO	0.04 + (0.944 x t)		
120	128t	136t	136t		F	I	A	B	75 mile/h ABOVE	FORCE ABOVE	GLW	5	W3080



<b>TARE-</b>	36.5 t
<b>CAPACITY, WEIGHT-</b>	107.5 t
<b>CAPACITY, VOLUME-</b>	—
<b>FLOOR AREA-</b>	—
<b>MIN.CURVE-</b>	60 m
<b>GEN.ARRGT.DRG.No.-</b>	0 605 802

<b>BRAKE-</b>	AIR; SCREW HANDBRAKE
<b>SUSPENSION-</b>	Y33A BOGIES
<b>COUPLINGS-</b>	INTERNATIONAL SCREW
<b>BUFFERS-</b>	OP 364 GX
<b>WHEELS-</b>	∅ 840 mm
<b>JOURNALS-</b>	∅ 130 mm

<b>TYPE-</b>	Sfggmrrss
<b>WAGON No.-</b>	31 70 4938 000 - 224
<b>BUILDER-</b>	ARBEL FAUVET RAIL
<b>OWNER-</b>	RfD