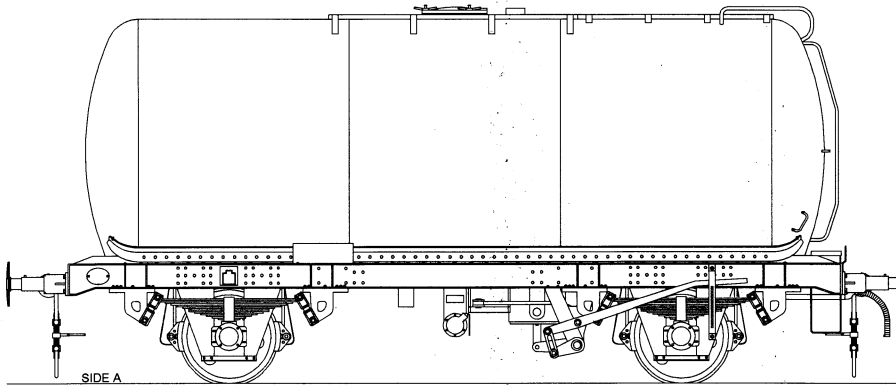
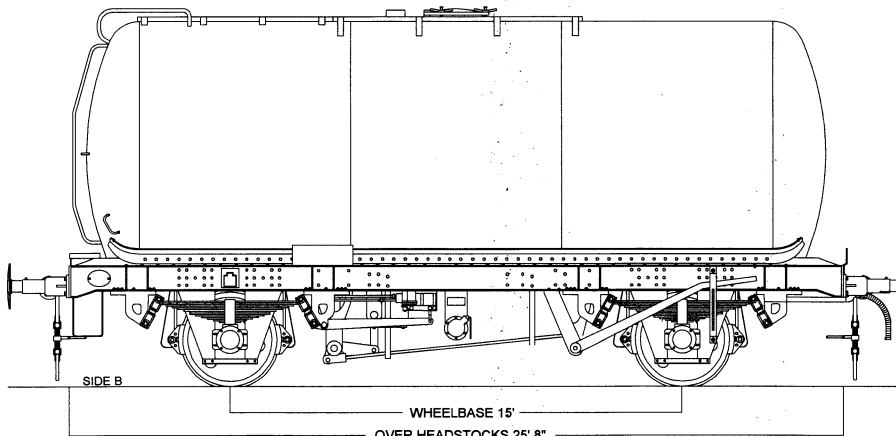
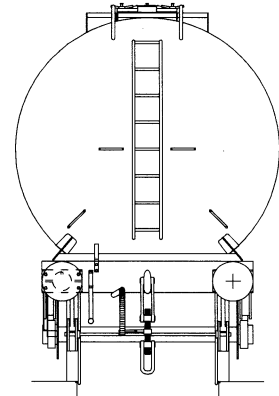


45T Class A Tank Wagon Design Code TT043C

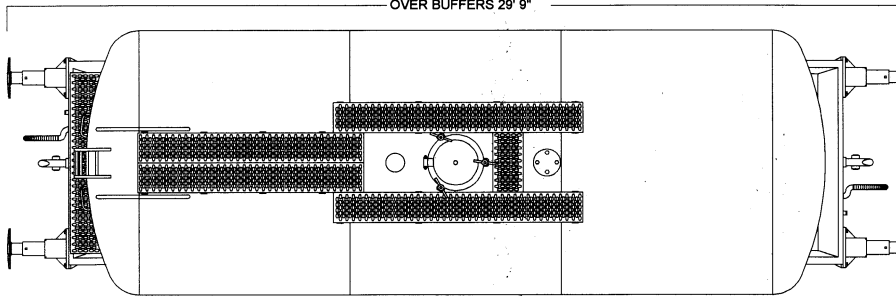
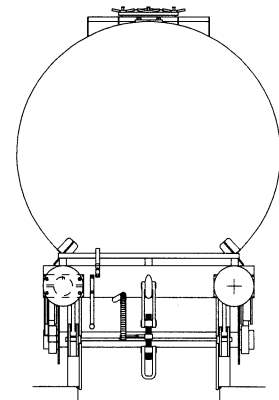
BRT57246-294 (range)



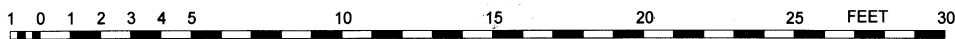
© COLIN CRAIG 2020



WHEELBASE 15'
OVER HEADSTOCKS 25' 8"
OVER BUFFERS 29' 9"



Scale 4mm to 1 foot



Drawing created in CAD by Colin Craig, based on the BR weight diagram dimensions, and web posted photographs.

Notes:

Built by R Y Pickering in 1965, for British Railway Traffic and Electric Co.
Vacuum braked with AFI (Accelerated Freight Inshot).
Gresham and Cravens Empty / Loaded auto changeover.
Buffers 620mm with 406mm dia.head.
UIC type screw coupling.
TOPs classification TTF.
Original owners numbers 5926 - 5965 (range*) , Registered as BRT 57246 -57294(range*)

*Owners numbers 5925, 53, 56, 59, 62, and 5965 were fitted with a through air pipe.
Registered numbers were BRT 57245, 273, 276, 279, 282, and 285.
These had the TOPs classification TTG and Design Code TT043D