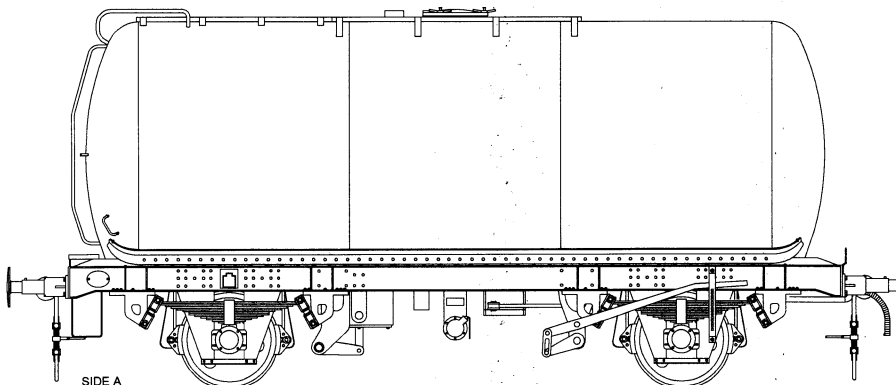
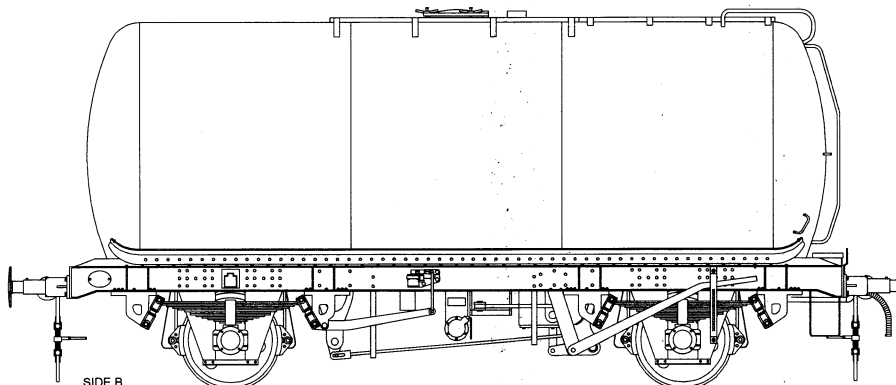
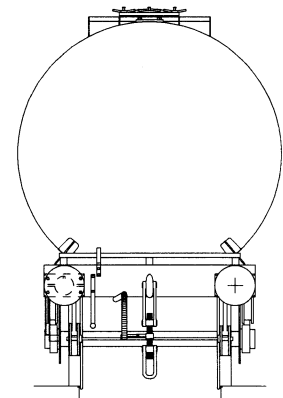


45T Class A Tank Wagon Design Code TT043F (TT043K)

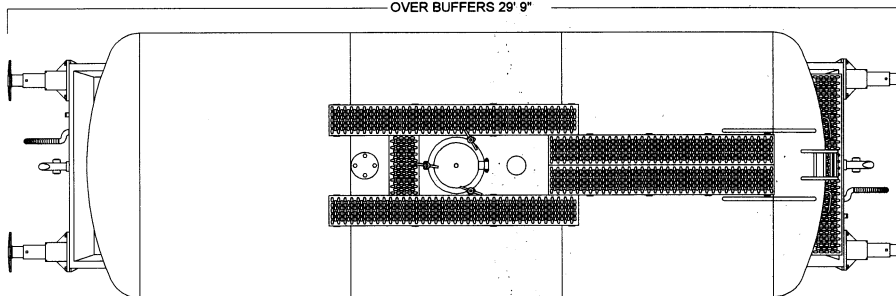
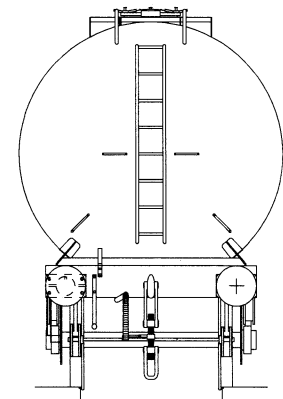
ESSO 56000 - 56103
(ESSO 56104 - 56199)



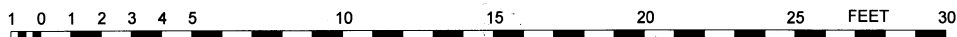
© COLIN CRAIG 2020



WHEELBASE 15'
OVER HEADSTOCKS 25' 8"
OVER BUFFERS 29' 9"



Scale 4mm to 1 foot



Drawing created in CAD by Colin Craig, based on the BR weight diagram dimensions, and web posted photographs.

Notes:

Built by R Y Pickering in 1965, for Esso Petroleum.
Vacuum braked with AFI (Accelerated Freight Inshot).
SAB Empty / Loaded auto changeover.
Buffers 620mm with 406mm dia.head.
UIC type screw coupling.
TOPs classification TTF.
Original owners numbers 6000 - 6103 , Registered as ESSO 56000 - 56103.
Most of the wagons were eventually converted to air braking, and Bruninghaus upgraded suspension. (TT043R, TT043V)

Design code TT043K was an identical construction, but for fixed coupled block trains.
Original owners numbers 6104 - 6199, Registered as ESSO 56104 - 56199.
They were equipped with special reduced length buffers for intermediate vehicles, and rigid bar couplers.
The concept was later abandoned.
All surviving wagons were converted to design code to TT043K with conventional 620mm buffers and UIC screw couplings.